

K45 360 Lite

An Ultra-Lightweight, High Power, Multi-Function Area Lighting System

Up to 85,000 Lumens Light Output



www.riteliteportablelighting.co.uk

The K45 360 Lite Gives

ULTIMATE POWER • CONTROL • PERFORMANCE

Up to 85,000 lumens output from three adjustable LED light heads

LIGHT UP YOUR WORK SITE AND NOT THE SKY!! THE K45-LITE PUTS MORE LIGHT WHERE YOU NEED IT – FIND OUT WHY!



360° area flood lighting



Directional area flood lighting



Adjustable light anywhere between 180° and 360°

- Compact to fit multiple units in the back of a car or van to transport and easy to store
- Ultra Lightweight - 23kg total system weight split into 3 easy to carry modules
- Stability Safety System - allows on site materials to be used to optimise stability
- Fully dimmable for control of light output and run-time when using optional battery generator
- Directional or 360° head deployment. Put the maximum amount of light where you need it
- Flexible & robust to cope with almost any remote lighting application

The K45 360 Lite is the easiest and safest product to operate in its class



(3.1 - 4.1m maximum height)

Features & Benefits



Best in class power efficiency

Highly efficient LED light heads and driver system delivers a powerful 85,000 lumens at only 650W power consumption.



Fast, simple, safe deployment system

Rapid one person deployment, minimal physical effort required.



3.1-4.1m height from small ground footprint

Provides excellent illumination of large areas requiring temporary lighting.



Easy to transport

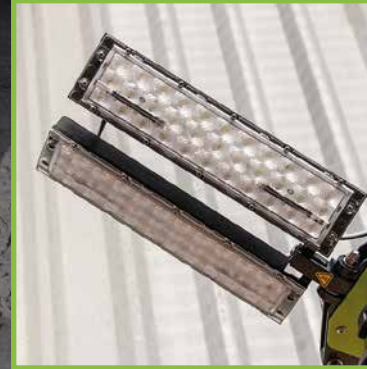
Compact when stowed. Low weight. Multiple units can be transported in a small vehicle.

Features & Benefits



Mains and generator powered

For use with existing power supply equipment. 110V or 240V options available.



Individual, fully adjustable light heads

Allows light to be adjusted to suit any application including a 360° light pattern.



Independently adjustable legs

Rapid to deploy, independently adjustable legs. Designed to enable maximum stability in all typical work site deployment conditions.



Ultra Lightweight

23kg total system weight split into 3 easy to carry modules. Can be carried safely by one person.

Features & Benefits



Stability Safety System

Safety Stability System – specially engineered, highly robust, lightweight tripods with additional flexible ballast bag system allows on site materials to be used to optimise stability without adding unnecessary weight when carrying to site.



Maximum usable light in any application

Industry leading triple light head design & Ritelite light management system.



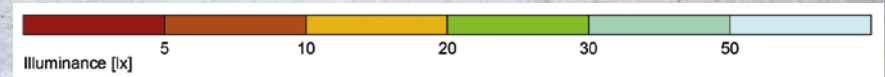
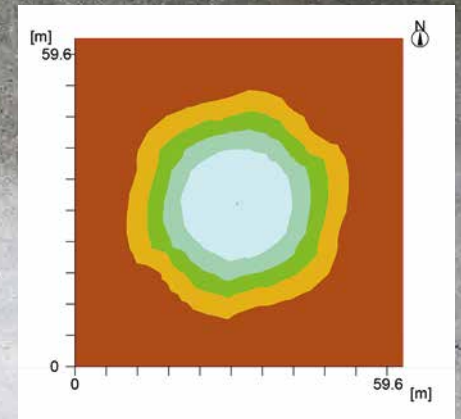
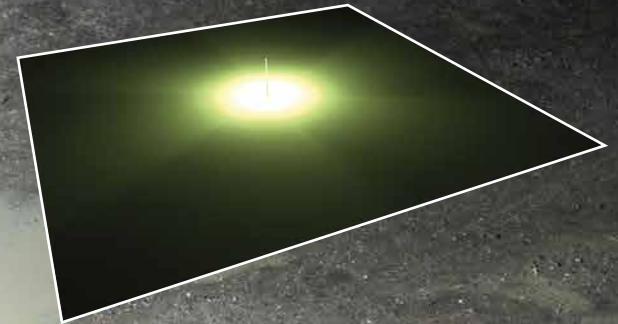
Built-in light level control

To enable light levels to be adjusted to assist operator setup and reduce power consumption when lower light levels. Provides sufficient light for the task required also allows optimum control of light output and run-time when using the optional mobile 110V & 230V battery powered generators.

360 Degree Area Lighting

For applications where multi-directional lighting is required

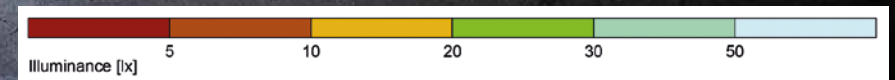
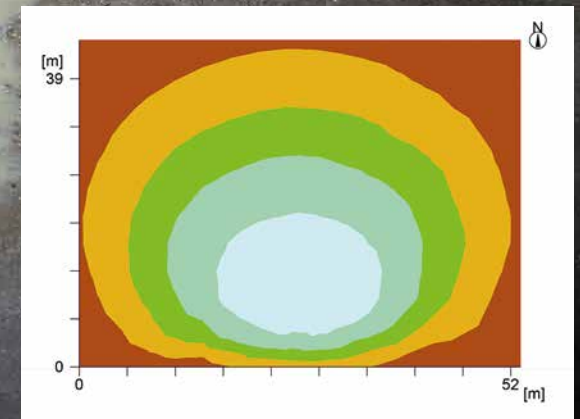
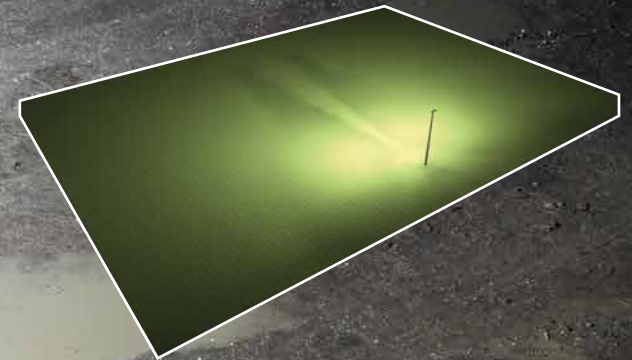
Average 20 lux over 3552 m²



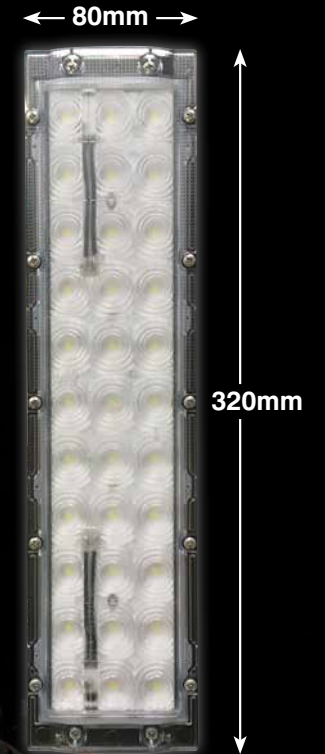
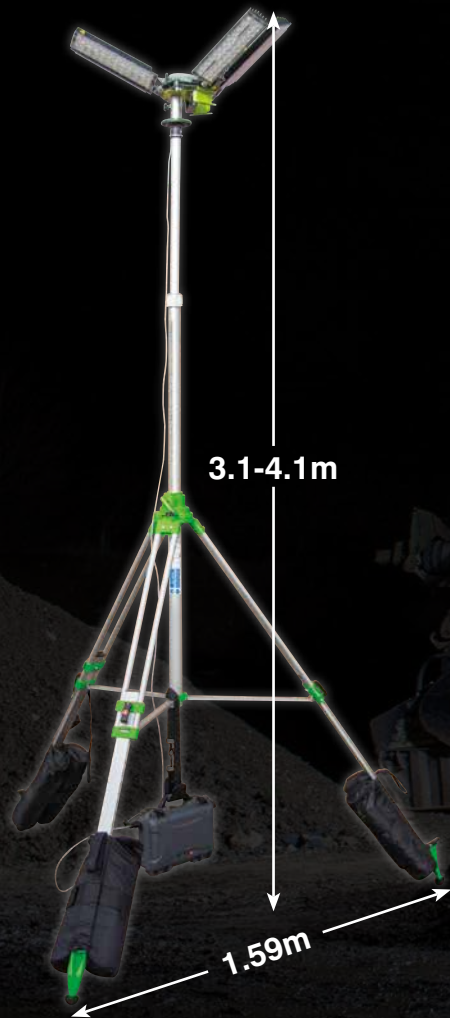
Directional area lighting

For industrial applications

Average 20 lux over 2028 m²



Technical Specifications



PRODUCT CODE	DESCRIPTION	WEIGHT
SLK45-LITE	K45 360 Lite - 600W 85,000Lm light head and separate driver	9.44Kg
SLK45-LITE/LDS	LED driver for standard K45 360 Lite light head	5Kg
SLK45-LITE-S	K45 360 Lite - 600W 85,000Lm light head with integral driver	14Kg
SLK45-LITE/TRP/3M	3m Tripod for K45 360 Lite	8Kg
SLK45-LITE/TRP/4M	4m Tripod for K45 360 Lite	9Kg
SLK45-LITE/BB	Ballast bag for K45 360 Lite tripod leg	N/A
SLK45-LITE/PB	Storage bag for K45 360 Lite light head	N/A

Accessories

BALLAST BAGS

A set of three ballast bags which can be attached to the legs of the tripod, increasing the stability of the unit. Add ballast of your choice.



GENERATORS

We offer a choice of two generators which are ideal for use with our K45 mobile lighting towers. Both are portable, efficient to run with low carbon emissions, and low noise levels.

1.6 KW

- Rated output: 1.6 KW
- Fuel Capacity: 4.2 litre
- Running time: up to 5 hours*
- Rated voltage: 110 or 230V
- Noise levels: 61 dBA
- Dimensions: 499 x 285 x 455mm
- Weight: 21Kg



How many K45 360 Lite's will the 1.6KW generator supply? 2 x K45 360 Lite LED lighting systems

3.0 KW

- Rated output: 3.0 KW
- Fuel Capacity: 10 litre
- Running time: up to 10 hours*
- Rated voltage: 230V
- Noise levels: 65 dBA
- Dimensions: 578 x 440 x 510mm
- Weight: 45Kg



How many K45 360 Lite's will the 3.0KW generator supply? 4 x K45 360 Lite LED lighting systems

EXTENSION LEADS

Extension leads are available in a variety of lengths to meet customer requirements. We offer a choice of plugs and sockets, also a choice of cable specifications.

* 1 generator powering 1 x K45 360 LED Lighting System. Duration may depend on operating conditions.



Established in 1988, Ritelite (Systems) Ltd is a specialist in portable & mobile lighting equipment with over 80 years combined experience in the industry.

Ritelite's head office and main manufacturing facility is located in Stamford, Lincolnshire. Ritelite also has an office in Wiltshire, England and a European base in Rheinfelden, Germany.

Ritelite is continually developing new innovative portable & mobile lighting products incorporating the market leading technology and designs.

As an ISO 9001:2015 and 14001:2005 accredited company Ritelite puts quality first reliably delivering high quality products to exceed customer expectations.

Ritelite works together with a network of local carrier partners to ensure the highest level of service to our customers worldwide.

For further information please get in touch with us

UK HEAD OFFICE

Ritelite (Systems) Ltd, Meadow Park, Bourne Road,
Essendine, Stamford, Lincolnshire, PE9 4LT, England

Telephone: +44 (0) 1780 758585

Fax: +44 (0) 1780 765700

E-mail: sales@ritelite.co.uk

GERMAN OFFICE

Telephone: +49 (0) 7623 3074308

Fax: +49 (0) 7623 3074310

Mobile: +49 (0) 176 45822464

E-mail: export@ritelite.co.uk

International Website: www.riteliteportablelighting.com

www.riteliteportablelighting.co.uk